



# NITTE

(Deemed to be University)

*Where there is space for every dream*



## NGSM INSTITUTE OF PHARMACEUTICAL SCIENCES

Paneer Campus, Deralakatte, Mangaluru - 575 018, Karnataka, India



4

Years,  
Countless  
smiles



# Justice **K S Hegde**

Founder (1909 - 1990)



## About the Management

Nitte Education Trust was founded in 1979 by Late Justice K S Hegde, former Judge of the Supreme Court of India and Speaker of the Lok Sabha. Justice Hegde strongly believed that education is pivotal to the overall progress of a community and this vision led to the birth of Nitte Education Trust. His legacy is being continued by his son, Mr N Vinaya Hegde.

## About Nitte University

Nitte University has been consistently ranked among the top 100 Universities in India in the National Institutional Ranking Framework (NIRF) by the Ministry of Education, GoI and is accredited with A+ Grade by the National Assessment and Accreditation Council of India (NAAC). The University offers undergraduate, postgraduate and doctoral programs in a variety of disciplines. International affiliations, encouragement to academic research, a strong emphasis on sustainability and a healthy student connect are the hallmarks of this growing university.



# Hall of Fame



**NITTE**

(Deemed to be University)

NAAC  
ACCREDITATION  
**A+ GRADE**



**NITTE**

(Deemed to be University)

NIRF UNIVERSITY  
RANKINGS 2024  
**66**



**NITTE**

(Deemed to be University)

THE WORLD UNIVERSITY  
RANKINGS 2025  
**1501+**



**NITTE**

(Deemed to be University)

QS SOUTHERN ASIA  
RANKINGS 2024  
**143**



**NITTE**

(Deemed to be University)

THE IMPACT  
RANKINGS 2024  
**301-400 BAND**



**ABSMIDS**

NIRF DENTAL  
RANKINGS 2024  
**6**



**NGSMIPS**

NIRF PHARMACY  
RANKINGS 2024  
**41**



**NMIT**

NIRF ENGINEERING  
RANKINGS 2024  
**101-150 BAND**



**NMAMIT**

NIRF ENGINEERING  
RANKINGS 2024  
**151-200 BAND**



**NGSMIPS**

NBA  
ACCREDITED  
BPHARM



**NMAMIT**

NBA  
ACCREDITED  
UG PROGRAMS



**NMIT**

NBA  
ACCREDITED  
UG PROGRAMS





# ABOUT THE INSTITUTION

Nitte Gulabi Shetty Memorial Institute of Pharmaceutical Sciences (NGSMIPS) established in 1983, is recognized by the Pharmacy Council of India and the All India Council for Technical Education, New Delhi. The college is ranked 41<sup>st</sup> in the National Institutional Ranking Framework (NIRF) 2024 by MoE, Govt. The BPharm program is accredited by the National Board of Accreditation (NBA).

The college offers

**DPharm | BPharm | MPharm | PharmD | PharmD (PB) | PhD**

NGSMIPS

# FACULTY



**Principal**

## **Prof (Dr) Marina Koland**

is an academican with over 3 decades of experience in pharmaceutical education and research.

The complete list of teaching faculty is available at  
[nitte.edu.in/ngsmips](http://nitte.edu.in/ngsmips)

# PROGRAMS

## **DPHARM**

**Intake:** 60 | **Duration:** 2 years

### **Eligibility**

Pass in Class 12 with not less than 45% marks in aggregate in Physics, Chemistry and Mathematics/Biology with English as one of the languages of study. The candidate should have completed 17 years of age as on 31st December of the year of admission.

### **Program Content**

#### **I Year:**

Pharmaceutics, Pharmaceutical Chemistry, Pharmacognosy, Human Anatomy & Physiology, Social Pharmacy.

#### **II Year:**

Pharmacology, Community Pharmacy & Management, Biochemistry & Clinical Pathology, Pharmacotherapeutics, Hospital & Clinical Pharmacy, and Pharmacy Law & Ethics.





# BPHARM

**Intake:** 100 | **Duration:** 4 years (8 semesters)

## Eligibility

Pass in Class 12 with not less than 50% marks in aggregate in Physics, Chemistry and Mathematics/Biology with English as one of the languages of study. The candidate should have completed 17 years of age as on 31st December of the year of admission.

## Program Content

**Semester I:** Human Anatomy & Physiology I, Pharmaceutical Analysis, Pharmaceutics, Pharmaceutical Inorganic Chemistry, Communication skills and Remedial Biology / Remedial Mathematics.

**Semester II:** Human Anatomy & Physiology II, Pharmaceutical Organic Chemistry I, Biochemistry, Pathophysiology, Computer Applications in Pharmacy and Environmental Sciences.

**Semester III:** Pharmaceutical Organic Chemistry II, Physical Pharmaceutics I, Pharmaceutical Microbiology and Pharmaceutical Engineering.

**Semester IV:** Pharmaceutical Organic Chemistry III, Medicinal Chemistry I, Physical Pharmaceutics II, Pharmacology I and Pharmacognosy & Phytochemistry I.

**Semester V:** Medicinal Chemistry II, Industrial Pharmacy I, Pharmacology II, Pharmacognosy & Phytochemistry II and Pharmaceutical Jurisprudence.

**Semester VI:** Medicinal Chemistry III, Pharmacology III, Herbal Drug Technology, Biopharmaceutics and Pharmacokinetics, Pharmaceutical Biotechnology and Pharmaceutical Quality Assurance.

**Semester VII:** Instrumental Methods of Analysis, Industrial Pharmacy II, Pharmacy Practice, Novel Drug Delivery System and Practice School.

**Semester VIII:** Biostatistics & Research Methodology and Social & Preventive Pharmacy.

## Elective core subjects (any two):

Pharma Marketing Management | Pharmaceutical Regulatory Science | Pharmacovigilance | Quality Control & Standardizations of Herbals | Computer Aided Drug Design | Cell & Molecular Biology | Cosmetic Science | Pharmacological Screening Methods | Advanced Instrumentation Techniques | Dietary Supplements & Nutraceuticals | Pharmaceutical Product Development | Project Work.



# BPHARM (Lateral Entry)

**Intake:** 10 | **Duration:** 3 years (6 semesters)

## Eligibility

Pass in DPharm with at least 45% marks.

## Program Content

Refer Semester III to VIII under BPharm.



# PHARMD

**Intake:** 30 | **Duration:** 6 years (inclusive of 1-year internship)

## Eligibility

Pass in Class 12 with not less than 50% marks in aggregate in Physics, Chemistry and Mathematics / Biology, with English as one of the languages of study (OR) Pass in DPharm from an institution approved by the PCI. The candidate should have completed 17 years of age as on 31st December of the year of admission.

## Program Content

**I Year:** Human Anatomy & Physiology, Pharmaceutics, Medicinal Biochemistry, Pharmaceutical Organic Chemistry, Pharmaceutical Inorganic Chemistry, Remedial Mathematics / Biology and Constitution of India.

**II Year:** Pathophysiology, Pharmaceutical Microbiology, Pharmacognosy & Phytopharmaceuticals, Pharmacology I, Community Pharmacy and Pharmacotherapeutics I.

**III Year:** Pharmacology II, Pharmaceutical Analysis, Pharmacotherapeutics II, Pharmaceutical Jurisprudence, Medicinal Chemistry and Pharmaceutical Formulations.

**IV Year:** Pharmacotherapeutics III, Hospital Pharmacy, Clinical Pharmacy, Biostatistics & Research Methodology, Biopharmaceutics & Pharmacokinetics and Clinical Toxicology.

**V Year:** Clinical Research, Pharmacoepidemiology & Pharmacoeconomics, Clinical Pharmacokinetics & Pharmacotherapeutic Drug Monitoring, Clerkship and Project Work.

**VI Year:** Internship or Residency Training including postings in speciality units. Students should independently provide clinical pharmacy services to the allotted wards.



# PHARMD (Post Baccalaureate)

**Intake:** 10 | **Duration:** 3 years (inclusive of 1-year internship)

## Eligibility

Pass in BPharm with 50% marks from an institution approved by the PCI. The candidate shall be admitted to IV year of the PharmD program.

## Program Content

Refer IV to VI year under PharmD

# MPHARM

**Intake:** 105 | **Duration:** 2 years

## Specializations

- Pharmaceutical Chemistry
- Pharmacology
- Pharmaceutics
- Regulatory Affairs
- Pharmaceutical Quality Assurance
- Pharmacy Practice
- Industrial Pharmacy

## Eligibility

Pass in BPharm from a recognized University, securing not less than 55% marks in aggregate.



# ADMISSION PROCEDURE

Candidates seeking admission to DPharm / BPharm / BPharm (Lateral) / PharmD / PharmD (Post Baccalaureate) / MPharm programs are required to submit the Enquiry form & Application available on **apply.nitte.edu.in**

Admission is based on merit in the qualifying examination.

The fee structure of all programs is available on our website, **nitte.edu.in** under 'Program Fee.'

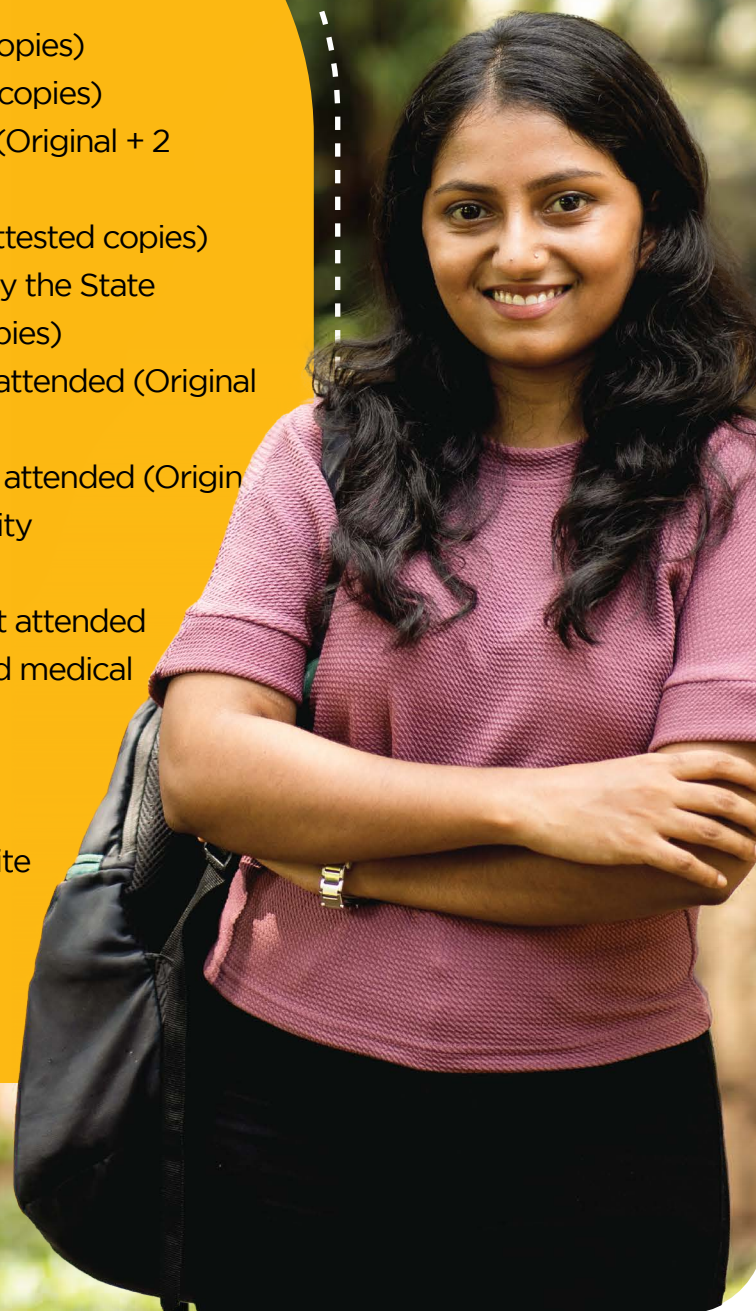
## Documents required for admission to DPharm / BPharm / BPharm (Lateral) / PharmD

- Class 10 Marks Card (Original + 2 attested copies)
- Class 12 Marks Card (Original + 2 attested copies)
- Diploma Marks Card, Diploma Certificate and Pharmacist Registration Certificate issued by the State Pharmacy Council [for lateral entry candidates only] (Original + 2 attested copies)
- Transfer Certificate from the institution last attended (Original + 2 attested copies)
- Conduct Certificate from the institution last attended (Original)
- Eligibility Certificate issued by Nitte University (This will be handled by Nitte)
- Migration Certificate from the Board of the institution last attended (Original)
- Physical Fitness Certificate from a registered medical practitioner (Original)
- Blood Group Certificate (Original)
- Aadhaar card copy of the student
- Photographs: Recent colour photo with white background, resolution 300-600 dpi  
Passport size 5 Nos. (35mm x 45mm) &  
Stamp size 5 Nos. (20mm x 25mm)



## Documents required for admission to PharmD (PB) / MPharm

- Class 10 Marks Card (Original + 2 attested copies)
- BPharm Marks Cards (Original + 2 attested copies)
- Degree Certificate issued by the University (Original + 2 attested copies)
- Industrial Training Certificate (Original + 2 attested copies)
- Pharmacist Registration Certificate issued by the State Pharmacy Council (Original + 2 attested copies)
- Transfer Certificate from the institution last attended (Original + 2 attested copies)
- Conduct Certificate from the institution last attended (Original + 2 attested copies)
- Eligibility Certificate issued by Nitte University (This will be handled by Nitte)
- Migration Certificate from the University last attended
- Physical Fitness Certificate from a registered medical practitioner (Original)
- Blood Group Certificate (Original)
- Aadhaar card copy of the student
- Photographs: Recent colour photo with white background, resolution 300-600 dpi  
Passport size 5 Nos. (35mm x 45mm) &  
Stamp size 5 Nos. (20mm x 25mm)



## Commencement of Classes

DPharm / BPharm / PharmD / MPharm programs commence on the date prescribed by the University, generally in August.

## PhD

The University offers a Doctoral program in Pharmaceutical Sciences. The pharmacy postgraduates in any specialisation are eligible to apply for full-time or part-time PhD.

## Career Opportunities

The pharmaceutical industry, one of the largest employers globally, offers numerous challenging and rewarding career opportunities. In India, pharmacy education initially focused on drug and pharmaceutical manufacturing until the early 2000s, after which it expanded to include patient care, emphasizing the well-being of those benefiting from drug development. Hence, a steady supply of skilled professionals is required for both sectors. A career in pharmaceutical sciences presents a unique opportunity to contribute to drug discovery, testing, formulation development and patient care. Pharmacy graduates can find exciting career opportunities in the below mentioned areas:

- **Pharmaceutical Industry:** Manufacturing & Production, Quality Control, Quality Assurance, Research & Development, Clinical Research, Contract Research Organizations, Contract Research and Manufacturing Services (CRAMS), Regulatory Affairs & IPR, Sales & Marketing, Bioinformatics, and Medical Writing.
- **Government Regulatory Bodies:** Drug Inspectors and Clinical Trial Inspector.
- **Academics:** Teaching & Research.
- **Pharmaceutical and Life Sciences Research Institutes**
- **Hospital Pharmacy:** Government or Private Hospitals, Tertiary and Teaching Hospitals, Primary Health Centres and Community Health Centres.
- **Pharmaceutical Distributors**
- **Community Pharmacy or Retail Pharmacy:** Medical stores, Chemists & Druggists, and 'Jan Aushadhi' project of the Govt. of India.





## Our Recruiters

The Institute-Industry Collaboration & Placement Cell (IICPC) has an excellent rapport with the following pharmaceutical companies which extend professional and technical support and recruit our students.

- Accenture
- Ahalia Hospital, Abu Dhabi
- Apollo Hospitals
- Aster Pharmacy
- Atrimed
- Biocon
- BlueCross Laboratories
- Eli Lilly
- Embiotic
- Ecron Acunova
- Freyr Solutions
- GSK
- Group Pharma
- ICON plc
- Indegene
- Indoco Remedies
- IQVIA
- Juggat Pharma
- Labcorp
- Life Care Pharmacy, Dubai
- Lotus
- Medorganics
- Medreich
- Merck
- Micro Labs
- MUM Hospital
- Parexel
- Pfizer
- Prakruti Life Science
- Sami Labs
- Sanofi Aventis
- Strides
- Sun Pharmaceuticals
- Synergia Bio Sciences
- Syngene
- Teva
- Thermo Fisher
- Trichur Heart Hospital
- Viatri



# FACILITIES



## Student Training

The PharmD and Pharmacy Practice students are trained in the NABH accredited, 1200-bed, multispecialty Justice K S Hegde Charitable Hospital. This gives them a better understanding of the treatment regimen, patient care etc.



## State-of-the-art Infrastructure

The college houses advanced research laboratories like the Institutional Research Laboratory, Central Research Laboratory, Advanced Instrumentation Centre, CADD Lab, Nano Science Laboratory and Cell Culture Laboratory. A separate ADR Monitoring Cell and Patient Counselling Centre have also been established at the hospital.



## Industry Training

The institution has tie-ups with renowned pharmaceutical companies and research centres to offer industrial training to students which will orient them with the corporate work culture and also help them comprehend and appreciate the practical application of theoretical concepts learnt in the college.







## Animal House for Pre-clinical Research and Services

In order to offer pre-clinical research services to industry and academia, the college has set up a 5000 sq.ft. dedicated “Nitte University Centre for Animal Research & Experimentation” (NUCARE). The Centre conducts a range of preclinical studies, including toxicology, pharmacokinetics, efficacy studies, medical device testing and quality control.



## Medicinal Garden

The college features a well-maintained arboretum - a medicinal and botanical garden where important plant species are labeled with their therapeutic values. This provides students with essential skills in botanical morphology, anatomical studies, physical fluorescence analysis and phytochemical studies, equipping them to learn and address drug-related issues.



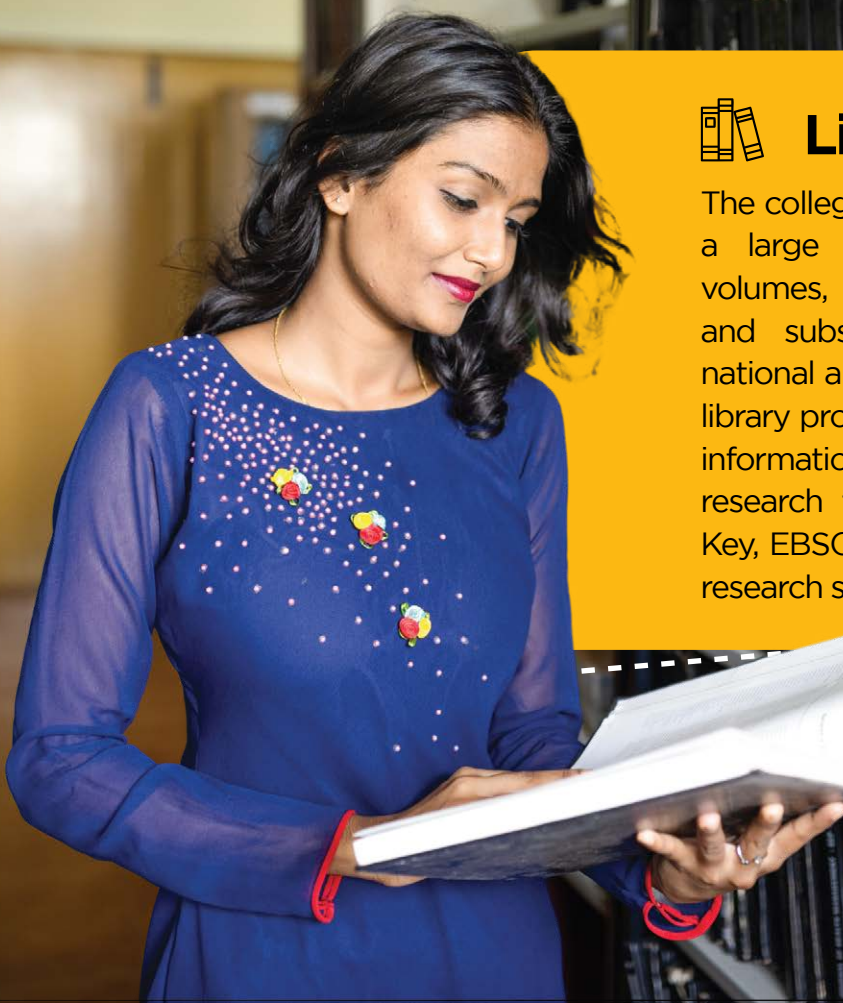
## Medicare

Students can avail medical and dental treatment at Justice K S Hegde Charitable Hospital and A B Shetty Dental College Hospital, located on the campus.



## Library

The college has a spacious library with a large collection of over 14,833 volumes, 4461 titles, 2024 e-journals and subscribes to more than 47 national and international journals. The library provides free access to valuable information through cross-disciplinary research tools like ProQuest, Clinical Key, EBSCO and DELNET to students, research scholars and faculty.





## Journal Club

The Journal Club provides a platform for students to critically evaluate recent articles in scientific literature. This improves their skills in technical writing, presentation in workshops, seminars, symposia and paper presentations. It also prepares students to face career challenges and gives them the confidence to assume new roles and responsibilities.



## Industry Collaboration

The institution has signed MoUs with prominent pharmaceutical companies like GSK GlaxoSmithKline, Merck Specialities Private Ltd, Indegene Private Limited, Atrimed Inc., for mutual assistance in the areas of research, placement and training. The college is also a member of the Karnataka Drugs and Pharmaceuticals Manufacturers Association (KDPMA), Bengaluru.



## Placement and Training

An active and vibrant Institute-Industry Collaboration & Placement Cell (IICPC) has been playing a catalytic role to bridge the gap and eliminate the disconnect that exists between the industry and academia and thereby meeting the objectives of all the stakeholders - students, industry, institute and society at large.

Pharmaceutical companies are regularly invited to conduct campus interviews. Guest lectures, workshops, seminars, conferences, and symposia related to the syllabus and professional training programs outside the curriculum like industry orientation, training in soft skills, communicative English, building self-confidence and personality development are conducted regularly.



## Conveyance

Free transport facilities are provided to students through a fleet of buses plying regularly from various locations in the city to the college and back. The campus also provides bicycles to commute within the campus. This is an initiative taken to maintain a healthy lifestyle and a green campus.







## Student Wellness Centre

The Wellness Centre aims to create a stress-free campus by promoting a healthy lifestyle and positive mental health amongst students. It provides mentoring and counselling services for students in a confidential and supportive environment through professionals.

Students experiencing stress related to academic, personal, social or other issues can access counseling assistance by contacting the counselor through helpline provided by the university.



## Hostel

The college provides safe, secure, clean and well-furnished hostels with hygienic food. The Hostel mess has an app 'Paaka Shaale' which provides the facility for the students to pre-book the vegetarian or non-vegetarian dishes of their choice apart from the regular menu. Recreational facilities include indoor & outdoor games and television. A resident warden is available to ensure that students are safe. Healthcare requirements like doctor on-call facility to handle medical emergencies are available. The hostel has zero tolerance towards ragging, use of tobacco and drug abuse. Security personnel are available round-the-clock in all the hostels.



## Sports

The campus has a 24,000 sq ft Indoor Sports Complex, which houses a floodlit basketball court, shuttle badminton courts, a tennis court, a volleyball court and a throwball court. An air-conditioned gymnasium and multi-purpose playground with running track are also available in the campus. A full-time physical education instructor is available in the Institute to train the students in sports activities.



# JUSTICE K S HEGDE CHARITABLE HOSPITAL

The 1200-bed NABH-accredited multi-specialty Justice K S Hegde Charitable Hospital serves as the teaching hospital for K S Hegde Medical Academy and provides the requisite training to students of health science programs. Renowned for its commitment to providing high-quality treatment at an affordable cost, this leading hospital plays a vital role in Mangaluru's healthcare landscape.

Equipped with all modern diagnostic and therapeutic facilities, the hospital conducts critical surgeries like valve replacement, bypass surgery, neonatal surgery, cancer surgery, paediatric surgery, cardiac surgery, laparoscopic surgery, arthroscopic surgery, joint replacement, complex spine and brain surgery, micro-laryngeal surgery and endoscopic sinus surgery.





## Broad Specialties

- General Medicine
- General Surgery
- Anaesthesiology
- Respiratory Medicine
- Orthopaedics
- Obstetrics & Gynaecology
- Paediatrics
- Psychiatry
- Dermatology, Venereology & Leprosy
- Ophthalmology
- Radiodiagnosis
- Otorhinolaryngology

## Clinical Facilities

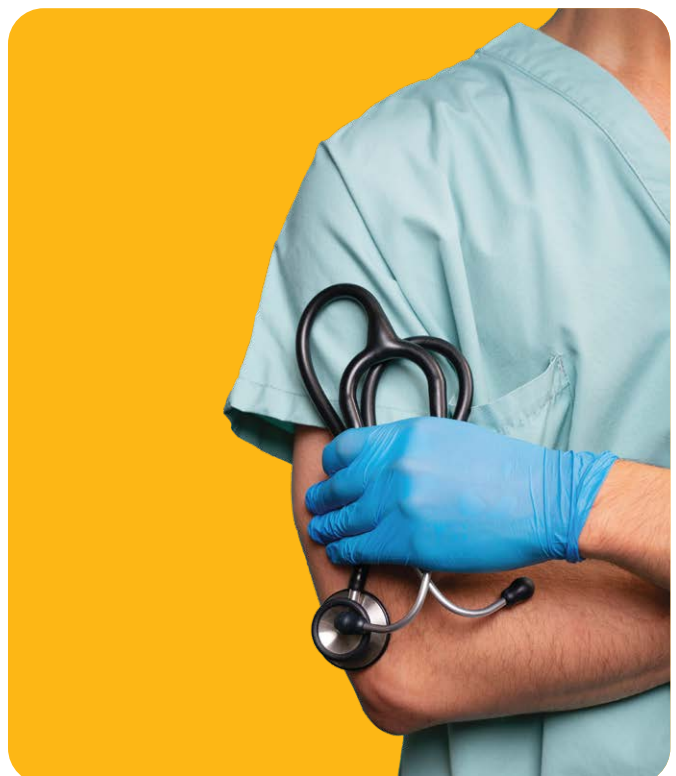
- Emergency Medicine
- Physical Medicine & Rehabilitation
- Audiology
- Speech Therapy
- Physiotherapy
- Pharmacy Practice
- Nutrition & Dietetics

## Super Specialties

- Cardiology
- Cardiothoracic Surgery
- Neurology
- Neurosurgery
- Nephrology
- Urology
- Paediatric Surgery
- Oncology & Onco Surgery
- Radiotherapy
- Endocrinology
- Medical & Surgical Gastroenterology
- Plastic Surgery
- Breast & Endocrine Surgery
- Nuclear Medicine & Theranostics
- Fertility & Reproductive Medicine
- Craniofacial Surgery

## Nitte Centre for Integrative Medicine & Research (CIMR)

This Centre combines Yoga, Meditation, Ayurveda and Naturopathy (AYUSH) with science, to provide clinical services and research on lifestyle and gut-related disorders. The Centre provides yoga, ayurveda and naturopathy based integrative therapy for a variety of lifestyle diseases. In addition, lectures / workshops on diet and nutrition are held to educate individuals on health and fitness. Prevention, cure and rehabilitation through integrative medicine is the Nitte CIMR's mission.



# Other Facilities

- Regular and air-conditioned rooms and suites
- Special clinic - 8 am to 5 pm
- Patient care and Counselling cell
- Sleep study and day-care facilities
- Uninterrupted Oxygen supply with dedicated PSA O<sub>2</sub> plant
- 18 modern operation theatres with advanced life-saving facilities
- Fully equipped 120-bed closed ICU, ICCU, NICU, PICU, SICU and Burns Unit
- 24-hour Emergency and Trauma Centre with attached OT, diagnostic and life support systems like ultrasound, x-ray, ventilators and monitors
- 24-hour clinical laboratory (NABL accredited), blood bank and pharmacy services
- Advanced Cardiac Cath lab and Dialysis unit
- Organ transplant services
- 1.5 Tesla MRI unit, Spiral C-Arm with IITV and fluoroscopy, 128 & 16 Slice CT, Slice 4D Ultrasound with colour doppler, Computed & Digital Radiography and Mammography with 3D Tomosynthesis
- Centre for Cancer Treatment and Research
- IVF Centre for Assisted Reproductive Therapy
- Centre for Craniofacial Surgery
- Advanced Neurology Lab
- Comprehensive Tissue Bank
- PET/CT





# Super Specialty Departments



## Cardiology

- Non-invasive procedures: 4D Transthoracic and 4D Transesophageal Echocardiography, TMT, Holter, ECG and Ambulatory BP
- Diagnostic & therapeutic interventional procedures: Coronary & peripheral angiograms, Coronary & peripheral angioplasties, Carotid angioplasties, Pericardiocentesis, Embolization procedures and Renal interventions
- Congenital heart disease interventions: Device implantation of ASD, VSD, PDA & others
- Electrophysiology studies, Pacemaker implantation, Cardiac resynchronization therapy & Implantable Cardioverter Defibrillator (ICD)
- Valvuloplasty and TAVR
- Stent graft placement for aortic aneurysms and aortic dissections



## Cardiovascular Thoracic Surgery

### Cardiac Surgeries

- Coronary artery bypass graft
- Aortic valve replacement
- Mitral valve replacement / repair
- Tricuspid valve repair
- Double valve replacement
- Repair of ASD and VSD
- Repair of Cyanotic congenital heart disease
- Repair of aortic aneurysm
- Surgery heart failures





## Thoracic Surgeries

- Lung resections
- Decortication
- Resection of Mediastinal tumours
- Repair of eventration diaphragm
- Excision of chest wall tumours



## Vascular Surgeries

- Aortobifemoral grafting
- Femoral popliteal grafting
- Repair of aneurysm
- Endovascular Aneurysm Repair (EVAR)



## Nephro Urology

- Modern haemodialysis unit and a renal ICU
- Renal transplants
- Laser Prostatectomy
- Laser Lithotripsy
- URS (Ureterorenoscopy) and endoscopic surgery to remove ureteral stones
- Transurethral surgeries to remove prostate and bladder tumours and AV fistula surgery for dialysis patients



## Paediatric Surgery

- Neonatal surgeries
- Paediatric urology
- Specialized laparoscopic setup for paediatric abdominal and thoracic surgery
- State-of-the-art Neonatal Intensive Care Unit (NICU) and Paediatric Intensive Care Unit (PICU)



## Nuclear Medicine

- PET/CT
- Dual head gamma camera
- Radionuclide therapy
- Nuclear medicine stress test





## Neurology

- Epilepsy Clinic
- Movement Disorder Clinic
- EEG machine and electrophysiology equipment
- Multiple Sclerosis Research Unit
- Advanced Neurological Research Centre



## Neurosurgery

- Neuro OT with C-arm, microscope, neuro endoscope & state-of-the-art equipment for minimally invasive and stereotactic surgeries supported by a full-fledged Neuro-ICU (NRICU)
- Surgeries to treat brain tumours, aneurysms, complex spine surgeries, endoscopic brain and spinal disorder



## Oncology

- Integrated Cancer Centre catering to all needs of cancer patients
- Comprehensive cancer care including advanced Radiotherapy treatment, Medical Oncology
- Surgical Oncology and Palliative care



## Radiation Oncology

- Two-Dimensional Radiotherapy (2DRT)
- Three-Dimensional Radiotherapy (3DCRT)
- Intensity Modulated Radiotherapy (IMRT)
- Image Guided Radiotherapy (IGRT)
- Rapid ARC Radiotherapy
- PET/CT



## Medical Oncology

- Chemotherapy (OP and IP basis)
- Bone marrow aspiration and biopsy
- Bone marrow transplant
- Immunotherapy (OP and IP basis)
- Intrathecal chemotherapy



## Surgical Oncology

- Head & Neck Onco surgery
- Musculoskeletal surgery
- Breast and Endocrine Surgery
- Thoracoscopic (VATS) Surgery: Oesophageal cancer, Lung and Mediastinal tumours
- Laparoscopic Surgery: Stomach, Pancreas, Colorectal, Gynaecological & Urological cancers
- Intersphincteric resection (ISR): Sphincter preserving surgery for low rectal cancer



## Endocrinology

- Diabetes care program for retinopathy, nephropathy, neuropathy, ischemic heart disease and management of gestational diabetes
- Paediatric diabetes clinic
- Treatment for obesity and lipid disorders, metabolic bone disease, disorders of the ovaries and testes, endocrine disorders of infertility, hirsutism, parathyroid and adrenal disorders



## Plastic Surgery

- Repair and reconstructive surgeries
- Microvascular surgery
- Cosmetic surgery
- Burn management
- Diabetic foot management
- Congenital deformities correction



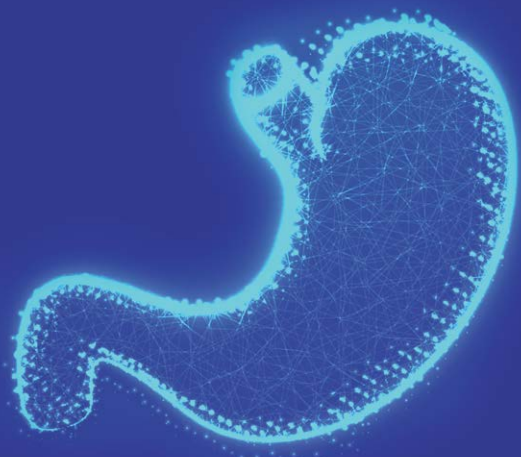
## Craniofacial Surgery

- Treatment of cleft and craniofacial anomalies and rhinoplasty
- Cleft and craniofacial care through treatment related to paediatrics, pedodontics, orthodontics and speech therapy



## Medical Gastroenterology & Hepatology

- Endoscopic Retrograde Cholangiopancreatography (ERCP): Detection & treatment of pancreatic & biliary disease
- Endoscopic Ultrasonography (EUS): Detection & Surveillance of pancreatic & biliary cancer
- Upper GI Endoscopy: Esophageal and Gastric cancer detection & surveillance
- Colonoscopy: Colon cancer detection & surveillance
- Therapeutic Endoscopy: Endoscopic removal of polyps in stomach, colon & rectum
- Cystogastrostomy for pancreatic pseudocyst
- Stenting for Advanced Oesophageal, Gastroduodenal, Biliary, Pancreatic and Colonic cancers
- Argon plasma coagulation for haemostasis and fulguration of unresectable tumours
- Oesophageal & anorectal manometry
- 24-hour pH impedance testing







## Surgical Gastroenterology & Hepato-Pancreato-Biliary Surgery

- Liver resections for tumours/cancers
- Liver transplantation
- Pancreatic surgeries for cancer/tumours and chronic pancreatitis
- Laparoscopic surgeries for cancer and non-cancerous diseases of oesophagus, stomach, small & large intestines and rectum
- Advanced laparoscopic surgeries for Gastroesophageal Reflux Disease (GERD), hiatal hernia and achalasia cardia
- Laparoscopic surgeries for gallstones, spleen and pancreas
- Laparoscopic weight loss/bariatric surgeries

## Specialty Departments



### General Medicine

- Modern diagnostic equipment and facilities like ICU and ICCU with monitors, ventilators & defibrillators
- Speciality clinics for diabetes, hypertension and geriatrics



### General Surgery

- Well-equipped modern operating theatres
- Latest instruments and equipment such as laparoscopes and endoscopes
- Routine procedures as well as advanced laparoscopic, thoracoscopic, gastrointestinal, hepatobiliary and pancreatic surgeries



### Orthopaedics

- Tissue Bank to support bone grafts, tendon grafts, amnion and skin grafts
- Trauma care
- Complete arthroscopy instruments for keyhole surgeries
- Robotic hip and knee replacement surgeries



## Ophthalmology

- Equipped with Slit Lamps, A-scan and Humphrey Field Analyser
- 24-hour eye bank
- Speciality clinics for cataract surgery and retinal defects
- Corneal transplant



## Otorhinolaryngology

- Treatment of tumours and cancers of the head and neck area and skull base surgery
- Micro-ear surgery, cochlear implant, micro-laryngeal surgery, endoscopic sinus surgery, video laryngoscopy, rigid and flexible bronchoscopy & esophagoscopy equipped with stroboscopy for diagnosing voice disorders & electronystagmography



## Obstetrics & Gynaecology

- Fertility clinic - IVF clinic for Assisted Reproductive Therapy
- Cancer screening
- High-risk pregnancy management
- Menopause clinic



## Respiratory Medicine

- Anti-tubercular treatment (DOTS)
- Treatment of naso bronchial allergy and asthma
- Pulmonary function test and arterial blood gas analysis
- Bronchoscopy
- Sleep lab
- Endoscopic Bronchial Ultrasonography





## Paediatrics

- Fully-equipped Neonatal Intensive Care Unit (NICU)
- Paediatric Intensive Care Unit (PICU)
- Epilepsy clinic, high-risk new-born clinic, development clinic, asthma clinic, well-baby & immunization clinic
- Special nephrology and nephro-urology clinic
- Genetic counselling, Genetics lab



## Dermatology

- Diode Laser for permanent hair reduction
- CO2 Laser for acne scar treatment, skin resurfacing and keloid treatment
- Spectra XT Laser for melasma treatment, tattoo, birthmark and mole removal
- Phototherapy unit
- Dermato-surgical procedures: Biopsies, surgeries for vitiligo & cryosurgery



## Radiodiagnosis

- 1.5 Tesla MRI unit
- 128 Slice MDCT scan with CT angiogram & 3D reconstruction facilities
- PET/CT
- 16 Slice MDCT scan with CT angiogram & 3D reconstruction facilities
- C-arm with image intensifier
- 4D Ultrasound with colour doppler unit
- Mammography unit with 3D tomosynthesis
- 6 X-ray machines
- 800 mA unit with IITV and fluoroscopy
- Digital Radiography



# Programs at Nitte

COLLEGES	PROGRAMS OFFERED
<b>NMAM Institute of Technology (Nitte)</b>	BTech: Artificial Intelligence & Data Science   Artificial Intelligence & Machine Learning   Biotechnology   Civil   Computer & Communication   Computer Science   Computer Science (Cyber Security)   Electrical & Electronics   Electronics & Communication   Electronics & Communication (Advanced Communication Technology)   Electronics (VLSI Design & Technology)   Information Science   Mechanical   Robotics & Artificial Intelligence   MTech   MCA   PhD
<b>Nitte Meenakshi Institute of Technology (Bengaluru)</b>	BTech: Aeronautical   Artificial Intelligence & Data Science   Artificial Intelligence & Machine Learning   Civil   Computer Science   Computer Science & Business Systems   Electrical & Electronics   Electronics & Communication   Electronics (VLSI Design & Technology)   Information Science   Mechanical   Robotics & Artificial Intelligence   MTech   MCA   MBA   PhD BSc (Honors): Civil Aviation Pilot Training   Civil Aviation Flight Dispatcher
<b>K S Hegde Medical Academy (Mangaluru)</b>	MBBS   MD.MS   MCh (Urology)   PhD Fellowship: Interventional Pulmonology   Neuroimmunology   Reproductive Medicine
<b>A B Shetty Memorial Institute of Dental Sciences (Mangaluru)</b>	BDS   MDS   Fellowship in Oral Implantology   PhD
<b>Nitte Institute of Allied Health Sciences (Mangaluru)</b>	BSc & MSc: Anesthesia & OT Technology   Medical Imaging Technology   Medical Lab Technology   Respiratory Therapy BSc: Renal Dialysis Technology   Radiation Therapy Technology MSc: Clinical Embryology MPH (Public Health)   MHA (Hospital Administration) PG Diploma: Computed Tomography Technology   MRI Technology   PhD
<b>NGSM Institute of Pharmaceutical Sciences (Mangaluru)</b>	DPharm   BPharm   PharmD   PharmD (PB)   MPharm   PhD
<b>Nitte College of Pharmaceutical Sciences (Bengaluru)</b>	BPharm   MPharm



<b>Nitte Usha Institute of Nursing Sciences (Mangaluru)</b>	BSc Nursing   PB BSc Nursing   MSc Nursing   PhD
<b>Nitte Institute of Physiotherapy (Mangaluru)</b>	BPT   MPT   PhD
<b>Nitte Institute of Speech &amp; Hearing (Mangaluru)</b>	B.ASLP (Audiology & Speech-Language Pathology) MSc: Speech-Language Pathology   Audiology   PhD
<b>Nitte University Centre for Science Education &amp; Research (Mangaluru)</b>	BSc (Honors) Biomedical Science MSc: Biomedical Science   Bioinformatics   Cancer Biology   Food Science & Technology   Microbiology   Biotechnology   Marine Biotechnology One Year MSc   PhD
<b>Nitte Institute of Architecture (Mangaluru)</b>	BArch
<b>Nitte School of Architecture, Planning &amp; Design (Bengaluru)</b>	BArch   BPlan   BDes   MPlan
<b>Nitte Institute of Communication (Mangaluru)</b>	BA (Honors) Media & Communication   PhD
<b>Nitte Institute of Hospitality Services (Mangaluru)</b>	BSc (Honors) Hotel Management BSc (Honors) Culinary Arts & Management BSc (Honors) Airlines, Tourism & Hospitality
<b>Justice K S Hegde Institute of Management (Nitte)</b>	MBA   PhD
<b>Nitte School of Management (Bengaluru)</b>	PG Diploma in Management

**Nitte  
School of Fashion  
Technology & Interior  
Design (Bengaluru)**

Diploma: Fashion Design | Interior Design  
BDes: Fashion Design | Interior Design  
MDes: Fashion Design | Interior Design

**Dr NSAM  
First Grade College  
(Nitte)**

BBA (Business Analytics | Logistic & Supply Chain Mgt | Financial Mgt | Marketing Mgt | HR Mgt)  
BCA (Data Analytics | IT | AI & Machine Learning)  
BCom (Financial Mgt | Banking, Financial Services & Insurance)  
BCom Professional (Financial Mgt | Banking, Financial Services & Insurance)  
BSc (Data Analytics | IT | AI & Machine Learning)

**Nitte  
Institute of Professional  
Education  
(Mangaluru)**

BCA (Artificial Intelligence & Machine Learning | Cyber Security & Digital Forensics | Cloud Technology & DevOps)  
BBA (Business Analytics | International Business | Banking, Financial Services & Insurance)

**Dr NSAM  
First Grade College  
(Bengaluru)**

BCA | BBA (General | Aviation Management)  
BCom (General | Professional | Business Data Analytics | Logistics & Supply Chain Management)

**Nitte  
Rukmini Adyanthaya  
Memorial Polytechnic  
(Nitte)**

Diploma in Engineering: Civil | Computer Science | Electrical & Electronics | Electronics & Communication | Mechanical | Apparel Design & Fabrication Technology

**[apply.nitte.edu.in](https://apply.nitte.edu.in)**









# Crafting the Future of **MEDICINE & HEALTHCARE**



**The Director (Administration)**  
Nitte (Deemed to be University)  
Medical Sciences Complex, Deralakatte,  
Mangaluru - 575 018, Karnataka, India

☎ 95131 88844 | 81476 27392  
info@nitte.edu.in | nitte.edu.in |    

Scan to Apply Now

